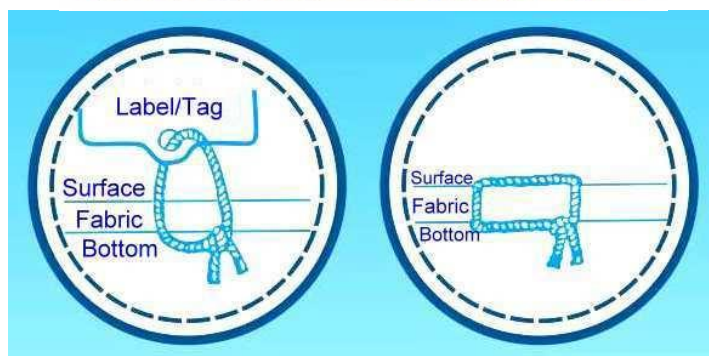


Automatic Label Attaching & Tie-off Machine



mod. LA-9100

Features :

* HIGH EFFICIENCY THREAD CUTTER

Automatic thread cutter cuts binding yarn at every time after binding, Hence quality of cutter material was investigated minutely, it cuts cleanly for a long period.

* EASY TO USE

Only step ON the foot pedal for machine start. It is very easy and simple operation.

* TROUBLE FREE

Due to CAM drive system, machine has very few troubles in long time use.

* STABLE STITCH CONDITION

Stitch condition is always stable of which is using accurate finished parts and careful fabrication.

* NEEDLE TO BE USED

Thick to thin needle can be attached in this machine, customer have the option of suitable needle selection.

* MATERIAL DAMAGE

Due to binding with yarn, machine brings on very few chance to damage materials.

* NO WORRY FOR INJURY

No pins and staples are used, customers are free of concern to dispose of pins or staples.

* TAG ATTACHING

Tag attaching is also possible with this machine.

* NO SPECIAL WORK SPACE IS REQUIRED

Machine has caster, it is easy to move therefore any place is possible to operate this machine.

Specifications

mod. LA-9100

Stitch speed	1.5~2 sec	Table size	900x750mm
Presser foot height	28mm	Table height	800mm
Needle used	TVx5, UY128	Nos. of stitch	1 or 2 position
Thread size	#30-80 Cotton	Stitch speed	Abt. 1.5-2sec
Stitch width	10mm	G.W./N.W.	118/155 kgs
Throat depth	210mm	Stitch yarn tail	7 or 25mm from the knot (switchable)
Start	Pedal	Detector	Beam sensor
Emergency stop	Pedal	Control	Manual / Automatic 1 / Automatic 2
Stop	Automatic stop		
Stitch width	10mm		
Power input	220V 50/60Hz		